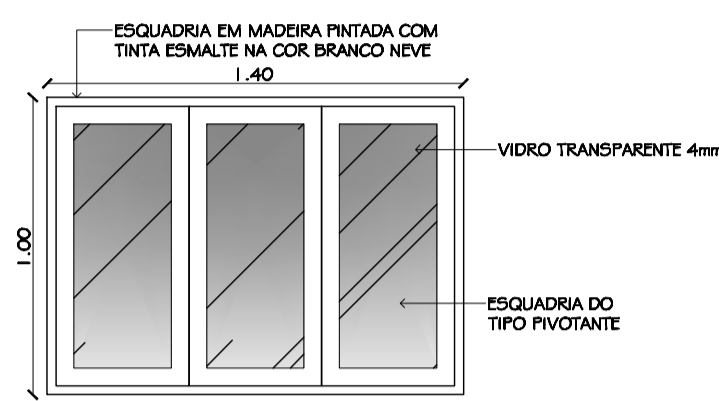
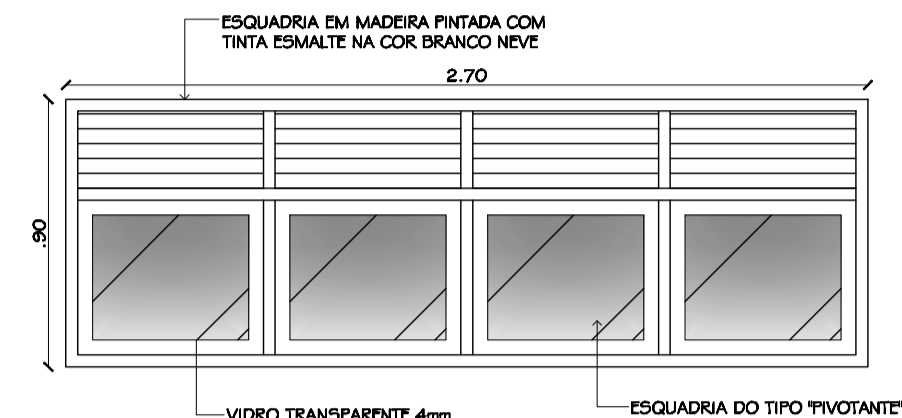


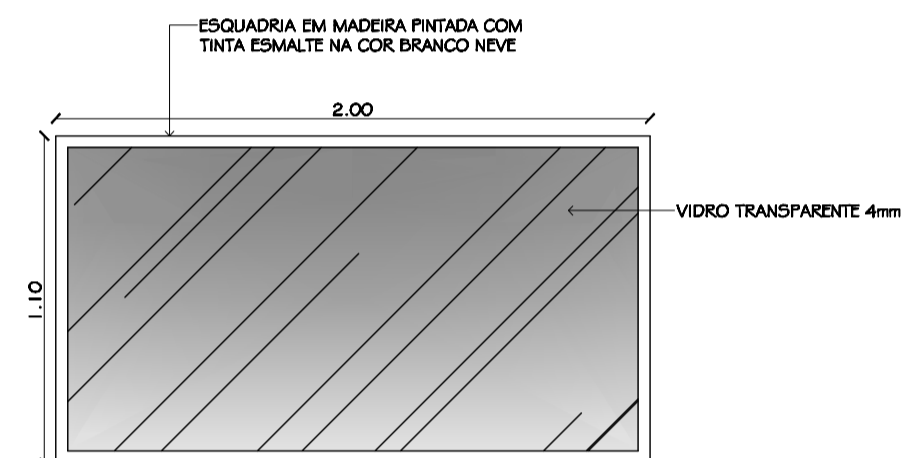
JR370  
ESCALA \_\_\_\_\_ 1/25



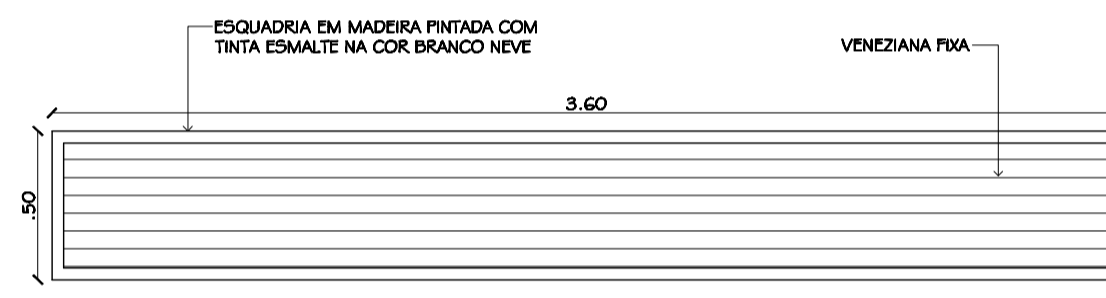
JR140  
ESCALA \_\_\_\_\_ 1/25



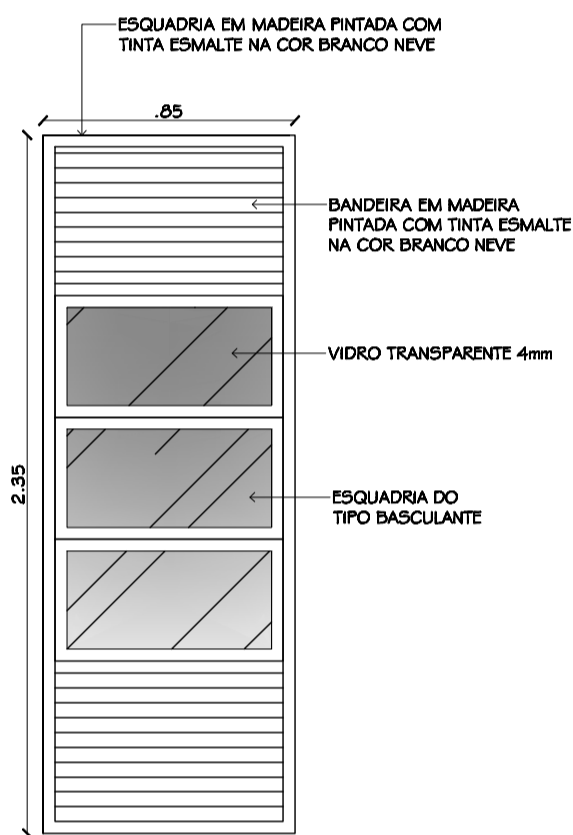
JR270  
ESCALA \_\_\_\_\_ 1/25



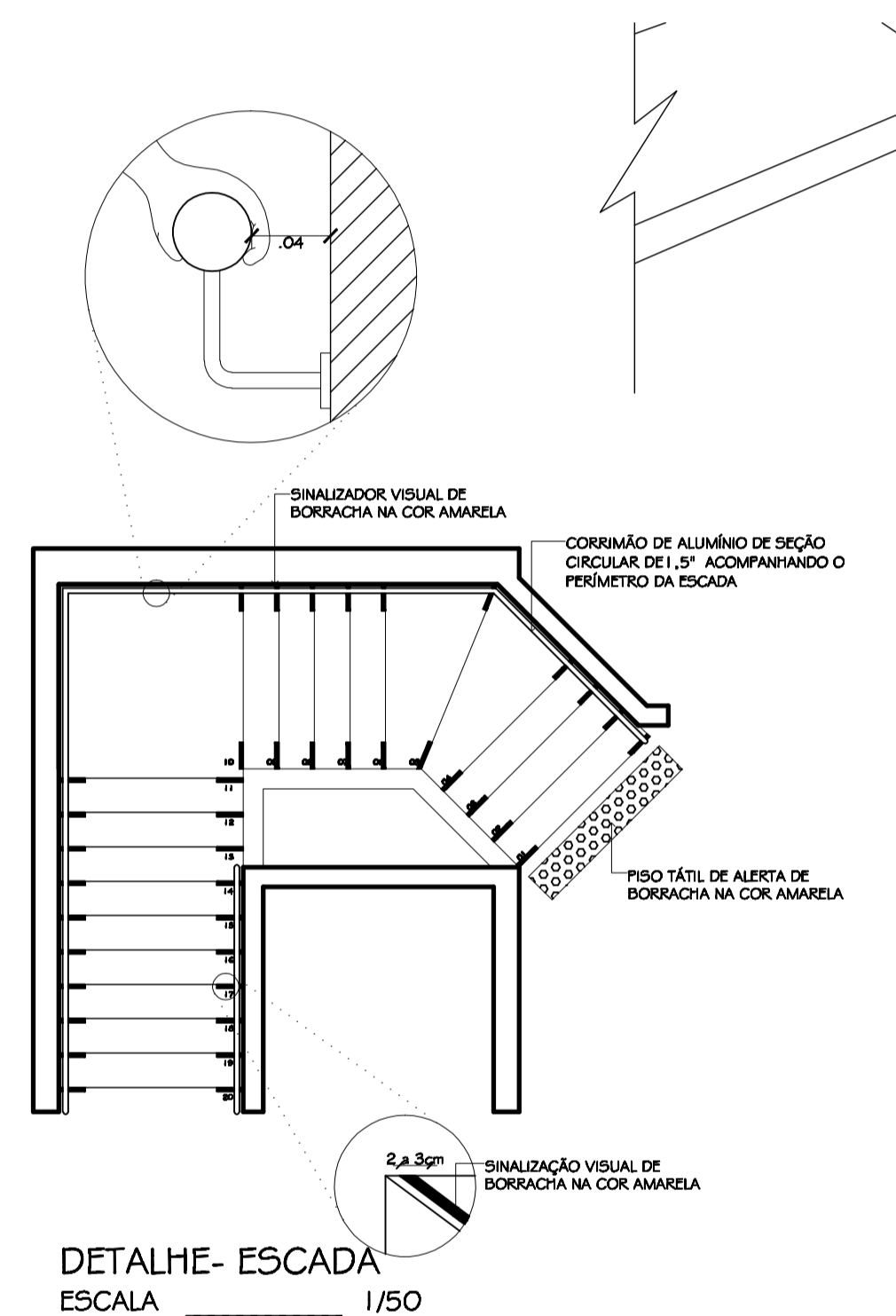
JR200  
ESCALA \_\_\_\_\_ 1/25



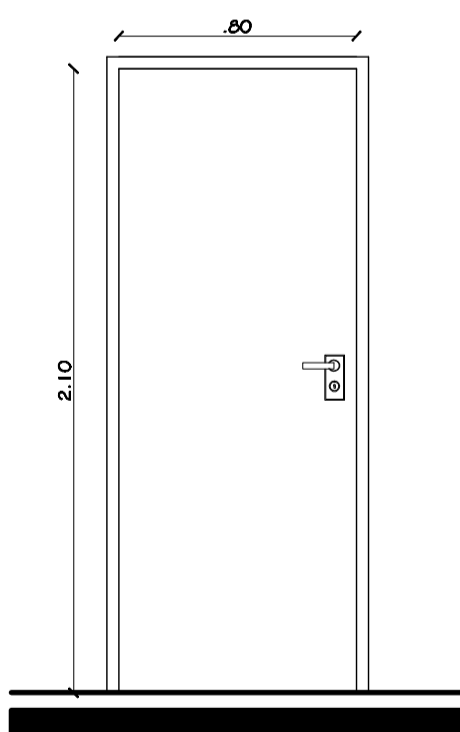
JR360  
ESCALA \_\_\_\_\_ 1/25



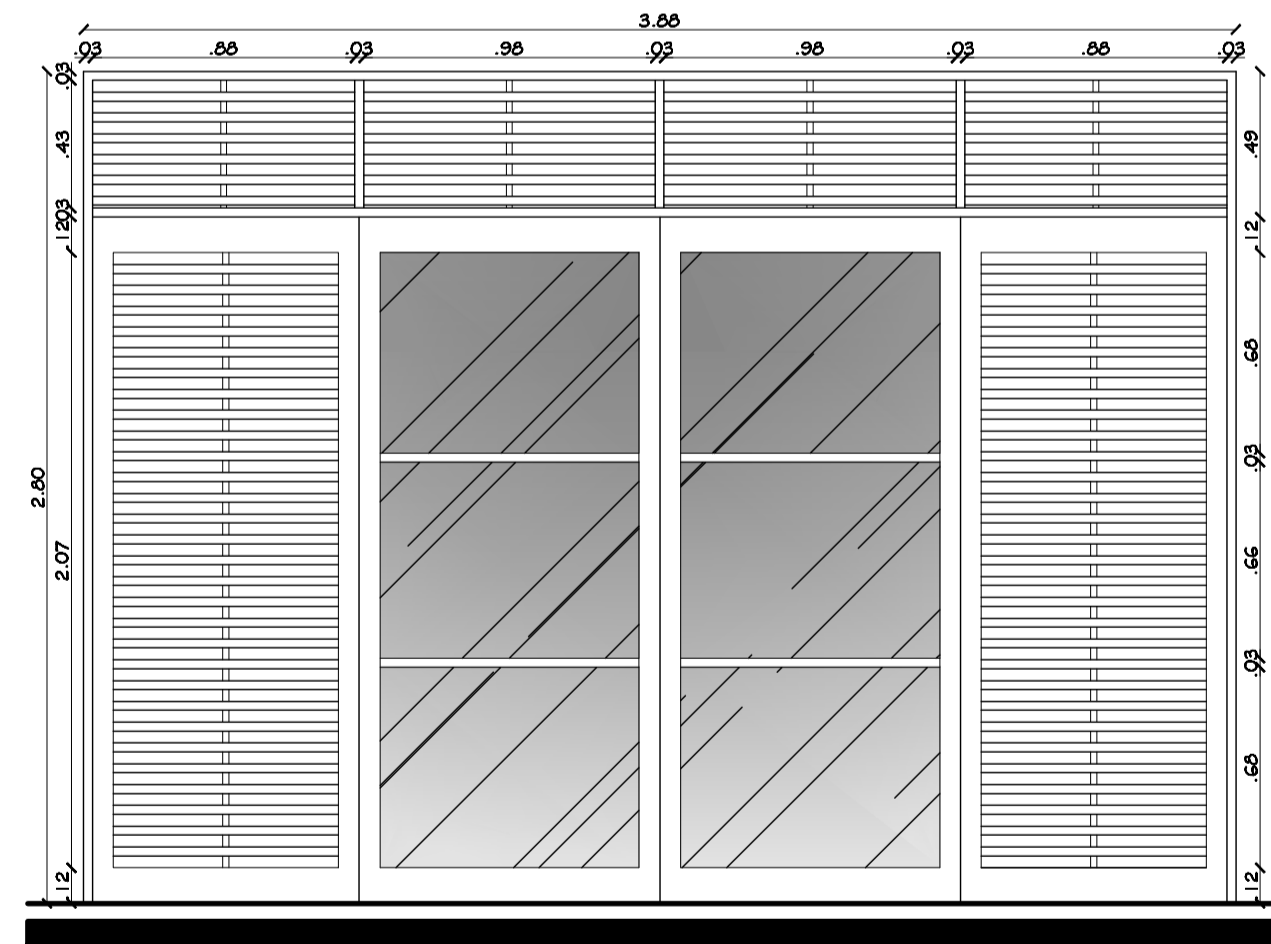
JR85  
ESCALA \_\_\_\_\_ 1/25



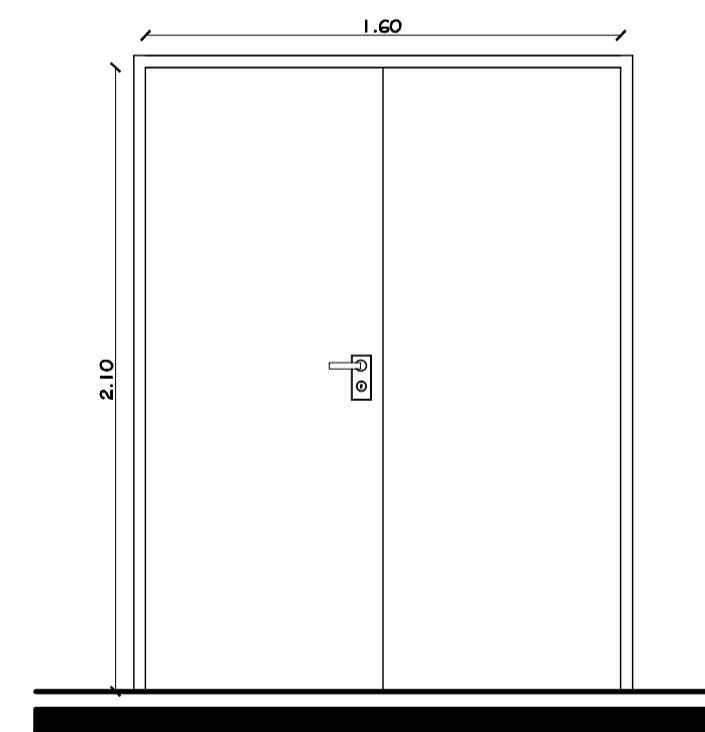
DETALHE- ESCADA  
ESCALA \_\_\_\_\_ 1/50



PR80  
ESCALA \_\_\_\_\_ 1/25



PR335  
ESCALA \_\_\_\_\_ 1/25



PR160  
ESCALA \_\_\_\_\_ 1/25

QUADRO DE ESQUADRIAS REAPROVEITADAS

ESQ	DIMENSÕES			CARACTERÍSTICAS			
	JANELAS	LARG.	ALT.	PEIT.	TIPO	QUANT.	MATERIAL
JR370	3.70	0.90	1.90		PIVOTANTE	29	MADERA E VIDRO
JR140	1.40	1.00	1.10		PIVOTANTE	03	MADERA E VIDRO
JR85	0.85	2.35	0.45		BASCULANTE	172	MADERA E VIDRO
JR270	2.70	0.90	1.90		PIVOTANTE	01	MADERA E VIDRO
VR200	2.00	1.00	1.10		PIVOTANTE	01	MADERA E VIDRO
JR360	3.60	0.50	3.05		PIVOTANTE	44	MADERA E VIDRO
ESQ	DIMENSÕES			CARACTERÍSTICAS			
PORTAS	LARG.	ALT.	BAND.	TIPO	QUANT.	MATERIAL	
PR80	0.80	2.80	0.70		GIRO	76	LAMINADO
PR160	1.60	2.80	0.70		GIRO	01	LAMINADO
PR365	3.85	2.85	0.70		CORRER	02	LAMINADO
<b>PR80</b>	<b>0.80</b>	<b>2.80</b>	<b>0.70</b>	<b>GIRO</b>	<b>02</b>	<b>LAMINADO</b>	

REVISÃO 00	29/04/2009	EMISSÃO INICIAL
REVISÃO 01	05/06/2009	SOLICITAÇÃO CONFORME PARECER TÉCNICO Nº 406/09-SIN

PROJETO	EDIFICAÇÃO	PROPRIETÁRIO - RESPONSÁVEL
Manuelle Andrade Costa CREA 210456502		

**arq'eng ARQ**  
 Av. Eng. Roberto Freire, 2521 - 85 05 - U14  
 Capão Macho - Paraná  
 Tel.: (41) 3307.8878  
 www.arqeng.com

Marcelo Amaral da Costa CREA 210394810 ENG. CIVIL	Wagner Martins Negreiros CREA 2104074086 ENG. ELETRICISTA	Marcelle A. Costa Negreiros CREA 2105598620 ENG. CIVIL	Manuelle Andrade Costa CREA 210456502 ARQUITETA
---	---	--	---

PROJETO EXECUTIVO ARQUITETÔNICO DA REFORMA DO DEPARTAMENTO DE ARTES (DEART)

PROPRIETÁRIO  
UFRN - CCHLA - DEPARTAMENTO DE ARTES

INTERDISCIPLINAR  
CAMPUS UNIVERSITÁRIO

CONTEÚDO  
DETALHAMENTOS

ESCALA	INDICADA	DATA	REVISÃO	FRANCA
		05/06/2009	01	<b>07/07</b>

ARQUIVO  
ARQ\_REFORMA\_DEART\_R01.dwg